



# MANGAR SUPINE TRANSFER SYSTEM

Certified



Corporation

PRODUCT EXPERTISE

THERAPEUTIC SOLUTIONS

SERVICE EXPERTISE



From the home of the world's leading  
inflatable medical device manufacturer

WIN  CARE

# WIN CARE

Established in 1981, for more than 40 years we have been designing and manufacturing innovative, inflatable lifting equipment. In the UK we are recognised as experts in post fall management and the Camel, Eagle and Elk lifting cushions are used by healthcare workers globally to lift someone who has fallen to the floor to a seated position.

Designed to protect the care giver from musculoskeletal injuries often sustained during a lift, the products also provide a safe, dignified experience for the patient.

Used widely in home care, care homes and by the emergency services, the products are the perfect companion for anyone looking after someone who has a propensity to fall.



## CONTENTS

**3 Mangar Supine Transfer System**

**4 Key Features**

**5 Specifications**

**6 User Instructions**

**7 Our Support**

**Contact us today**

**For more information visit**

[winnicare.uk](http://winnicare.uk)

Email: [enquiries@winnicare.uk](mailto:enquiries@winnicare.uk)

Phone: 0800 2800 485

# MANGAR SUPINE PATIENT TRANSFER SYSTEM

The Rhino and Swift are the latest edition to the lifting cushion range, and are perfect for use in a hospital environment. The devices enable healthcare workers to lift and transfer patients easily, wherever they fall, with minimal moving and handling required by the caregiver, while providing a stable, safe experience for the patient. Designed for use in all areas of a hospital, including operating theatres, X Ray and MRI scanners, general wards and car parks.

Developed in collaboration with UK academic manufacturing specialists AMRC and user experience specialists ATiC, the products have been designed using the latest technology.

The full system comes in three parts, which can be stored and transported in a specifically designed, easy wheel roller bag. The system includes;

## Rhino Lifting Cushion

This inflatable lifting device is designed to lift a patient in a supine position from the floor. When inflated, the Rhino lifts the patient to the height of a bed or stretcher.

## Swift Transfer Slide

The Swift enables healthcare workers to transfer and reposition patients in the supine position with minimal moving and handling force needed, while providing a stable, safe experience for the patient.

## Airflo Duo Compressor

The Airflo Duo Compressor is compatible with both the Rhino and Swift and can be used off either battery or electric mains power.





## KEY FEATURES

1. The pump handset fixes to the inflatable, allowing a hands free approach from healthcare workers
2. Airflo Duo pump can be operated from mains or battery – it doesn't matter where the patient falls
3. Screen printed markings to ensure patient is positioned on the products correctly and safely
4. Overall the product is the lightest on the market – 12KG plus the bag (less than 20KG in total)
5. Flexible, anti-rip lightweight material means folding and putting away the product after use is very easy
6. Easy to detect when each level of the Rhino is fully inflated - visual and audio cues
7. Specially designed carry bag to store and transport products easily
8. State of the art infection control materials used and seams are radio-frequency welded.
9. Repairs and servicing done in the UK – downtime is kept to a minimum

Scan the QR code to watch the Mangar Supine Transfer System video:



SCAN ME



## SPECIFICATIONS

### MANGAR Swift Transfer Slide

Transfer and reposition patients in the supine position with minimal moving and handling force needed, while providing a stable, safe experience for the patient.

**Maximum User Weight:** 500kg\* (1102lbs/79stone)\* **Overall Length (approx):** 204cm (80")

**Inflated Height (approx):** 14cm (5.5") **Overall Width (approx):** 100cm (39")

**Weight:** 1.5kg (3.3lbs)

### MANGAR Rhino Lifting Cushion

Lifts a person in the supine position from the floor to the height of a bed or stretcher.

**Maximum User Weight:** 500kg (1102lbs/79stone)\* **Overall Width (approx):** 112cm (44")

**Inflated Height (approx):** 72cm (28") **Weight:** 7.5kg (16.5lbs)

**Overall Length (approx):** 204cm (80")

### MANGAR Airflo Duo Compressor

Each battery charge completes up to 20 complete lifts and transfers.

**Weight:** 2.8kg (6.2lbs)

**Max/Min temperature:** +45C / 5C

**Battery type:** Lithium Ion 1 x 25.2v - 6200Ah

**Battery Life:** 500 charging cycles

\*Product has been tested up to 500kg, but an individual risk assessment should be performed for each patient.

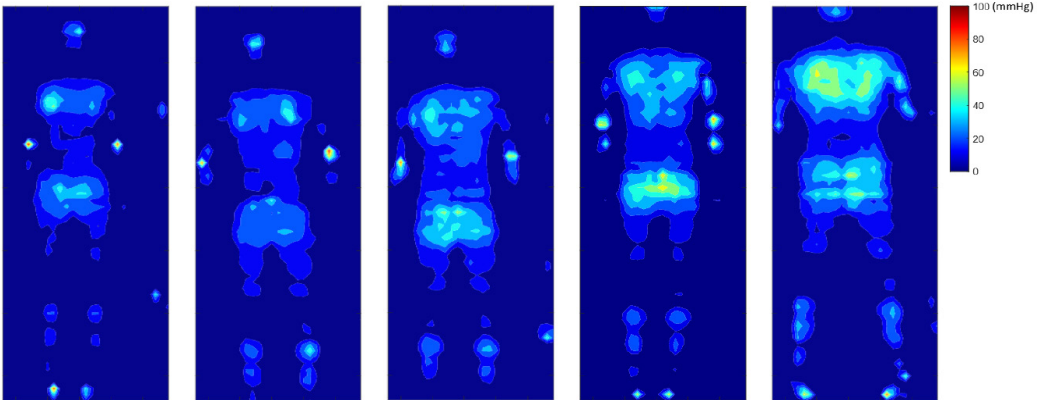
# PRODUCT TESTING

The Mangar Rhino, Swift and Airflo Duo have been designed in our production facility in Presteigne, Wales. These products have been rigorously tested by UK academic manufacturing specialists AMRC and user experience specialists ATiC.

The testing including measuring the posture, muscle activity and perceived exertion scale of the handlers, and the head velocity, body pressure, stability and comfort of the simulated patient during lateral transfers. The 8 muscles that were measured for activity included: 2 forearm muscles, 4 back muscles and 2 upper arm muscles.

Key findings included:

- When tested against a competitor product, the Mangar Swift's comfort score was significantly higher.
- When compared against other tools used for lateral transfers\*, the Mangar Swift showed lower muscle activity to perform a transfer.



Images above show pressure mapping of 5 simulated patients at various weights ranging from 55kg to 106kg (left to right). This shows the mean pressure across the trial, transferring the patient using a Swift, from a Rhino to a bed.

\*Hwang J, Kuppam VA, Chodraju SSR, Chen J, Kim JH. Commercially Available Friction-Reducing Patient-Transfer Devices Reduce Biomechanical Stresses on Caregivers' Upper Extremities and Low Back. Hum Factors. 2019;61(7):1125-1140. doi:10.1177/0018720819827208 & Hwang J, Kuppam VA, Chodraju SSR, Chen J, Kim JH. Evaluation of different patient transfer devices in reducing biomechanical exposures among professional caregivers. Proc Hum Factors Ergon Soc. 2018;2(October):933-937. doi:10.1177/1541931218621214

# OUR SUPPORT

## Sales

Our commercial team has many years experience and on a day to day basis will provide support for you and your customers.

We will join you for face to face and virtual meetings, and deliver product demonstrations. Our dedicated, knowledgeable team are always on hand to offer technical support where required.

## Training

There is an online training portal which you can use to understand more about post fall management and the use of our inflatable products. In addition, our commercial team will provide in-depth training in person or virtually as needed.

## Warranties

The 2 year warranty is given against defects in material and workmanship and comprises piece, parts and labour. The guarantee is not valid in the case of fair wear and tear, wilful damage, common neglect, misuse or unauthorised

alteration or repair by unqualified persons. Note: Batteries are specifically excluded from this warranty.

## Servicing

To ensure optimum performance of your Mangar device we recommend an annual service. We will provide service plans and price lists for associated parts.

## Tailored To You

Please talk to us about your specific training and servicing needs, we are happy to put together a tailored plan for specific requirements.

## Where to purchase

The Mangar Supine Transfer System is available to purchase directly from Winnicare, or through various frameworks including:

**NHS**  
Supply Chain

**NHS**

Shared Business Services

PRODUCT EXPERTISE

THERAPEUTIC SOLUTIONS

SERVICE EXPERTISE



WinnCare in the UK delivers innovative healthcare solutions backed by 70 years of British manufacturing experience.



## Rhino Lifting Cushion / Swift Transfer Slide / Airflo Duo Compressor

[enquiries@winnCare.uk](mailto:enquiries@winnCare.uk)

[winnCare.uk](http://winnCare.uk)

